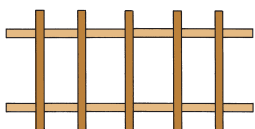


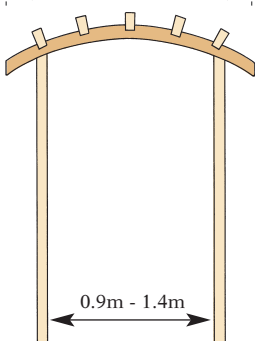


BOW TOP ARCH

PLAN

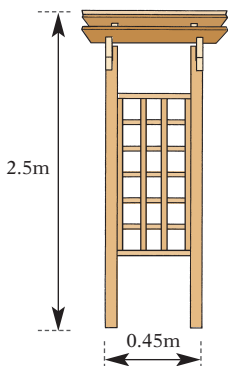


1.6m



0.9m - 1.4m

0.720m



2.5m

0.45m



BOW TOP ARCH (BTA)



5 019063 601432 >

Grange Code: BTA

ALL PRODUCTS ARE MEASURED TO THE HIGHEST AND WIDEST POINT AND ALL SIZES ARE APPROXIMATE

PLEASE SEE OVERLEAF FOR ASSEMBLY INSTRUCTIONS

GRANGE FENCING LIMITED

Halesfield 21, Telford TF7 4PA


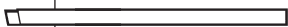


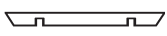
Tel: 01952 588088 Fax: 01952 581522

Email: sales@grangefen.co.uk Web: www.grangefen.co.uk





OUT OF HOURS MESSAGE SERVICE: 01952 588088

JULY 2011 - VERSION 2

PARTS SUPPLIED

Ref.			Qty.
A	POSTS		2
B	POSTS		2
C	SIDE SECTIONS		2
D	ROOF BEAMS		2
E	ROOF RAFTERS		5


**ELITE
BOW TOP ARCH
ASSEMBLY INSTRUCTIONS**

1x	HARDWARE PACK:		
w	4 x 50 csk		10
x	8 x 40 csk		16
y	3.5 x 17		32
z	L CLIPS		8

TOOLS REQUIRED (not supplied)

POZIDRIVE SCREWDRIVER - ELECTRIC DRILL

BEFORE YOU START

- Check the pack/s and make sure that you have all of the parts listed above. If not, contact your retailer who will be able to help you.
- When you are ready to start, make sure you have the right tools to hand, plenty of space and a clean, dry area for assembly.
- It is advisable for two people to carry out the work.

SITE PREPARATION

Excavate a 300mm square hole (approx) for each post to a depth of at least 300mm. (see Fig.A)

We would recommend that you use **MetCrete**, fast set post fixing concrete to fix your posts. Easy to use, it sets in just 10 minutes.

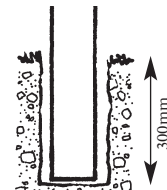


Fig A.

ASSEMBLY

1. Begin with the roof assembly.
2. Mark off five points along the length of each of the curved beams where the rafters will be fitted (see Fig.1). It is recommended that the centre is marked first (1) and the other points measured from it.

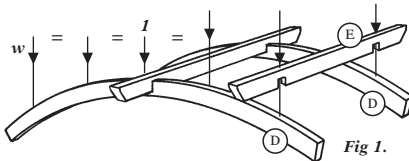


Fig 1.

3. Fix the rafters to the curved beams using screws (w) from the top side of the rafters into the curved beams.
4. Use the Trellis Sections (C) to mark where the 'L Clips (z) need to be fitted to the posts. The 'L Clips should be positioned so that they fit into the corners of the trellis. The top clips should be 100mm below the shoulder at the top of the post (see Fig.2).

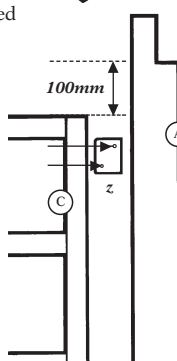


Fig 2.

5. Fit the trellis to the metal brackets using screws (y). NB. Check the posts are the correct way around so that they fit inside the roof curved beams (see Fig.3).

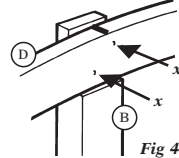


Fig 4.

6. Fit the roof assembly onto the posts of the side assemblies and fix at the desired position with screws (x). Make sure the overhang at each end is the same.

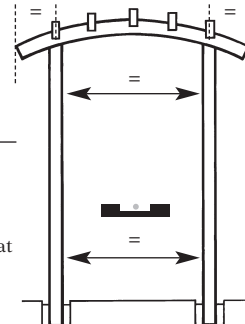


Fig 3.

AFTERCARE

To ensure longevity of your structure it is recommended that it is treated with a wood preservative on a yearly basis.